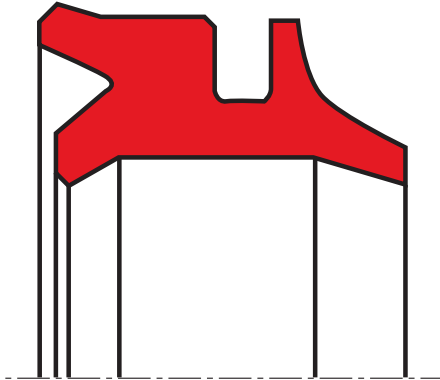


wiper A12-B

seal spec



description

wiper including additional sealing lip and secondary lip. used in combination with tandem seal systems to reduce residual oil film, also used as complete solution for pneumatic applications in small diameter range (max. 16 bar or 230 psi). the technically accurate closure at the cylinder is providing reliable protection, even for heavy contamination.

application



not bolded symbols; please consult our technical for application limitations

category of profile

machined only.

single acting

area of application: hydraulics

operating parameters & material

diameter range: up to 600 mm

material	temperature	max. surface speed	max. pressure ¹	hydrolysis	dry running	wear resistance
s-mart PU	-30 °C ... +110 °C	4 m/s	16 bar (1,6 MPa)	-	+	++
s-mart HPU	-20 °C ... +110 °C	4 m/s	16 bar (1,6 MPa)	++	+	++
s-mart LTPU	-50 °C ... +110 °C	4 m/s	16 bar (1,6 MPa)	-	+	++
s-mart SPU	-20 °C ... +110 °C	5 m/s	16 bar (1,6 MPa)	++	++	++
s-mart GPU	-30 °C ... +110 °C	4 m/s	16 bar (1,6 MPa)	++	+	++

the stated operation conditions represent general indications. it is recommended not to use all maximum values simultaneously.

surface speed limits apply only to the presence of adequate lubrication film.

++ ... particularly suitable

o ... conditional suitable

+ ... suitable

- ... not suitable

for detailed information regarding chemical resistance please refer to our "list of resistance". for increased chemical and thermal resistance rubber materials are to be preferred, polyurethan materials increase wear resistance.

¹ pressure ratings are dependent on the size of the extrusion gap.

surface quality

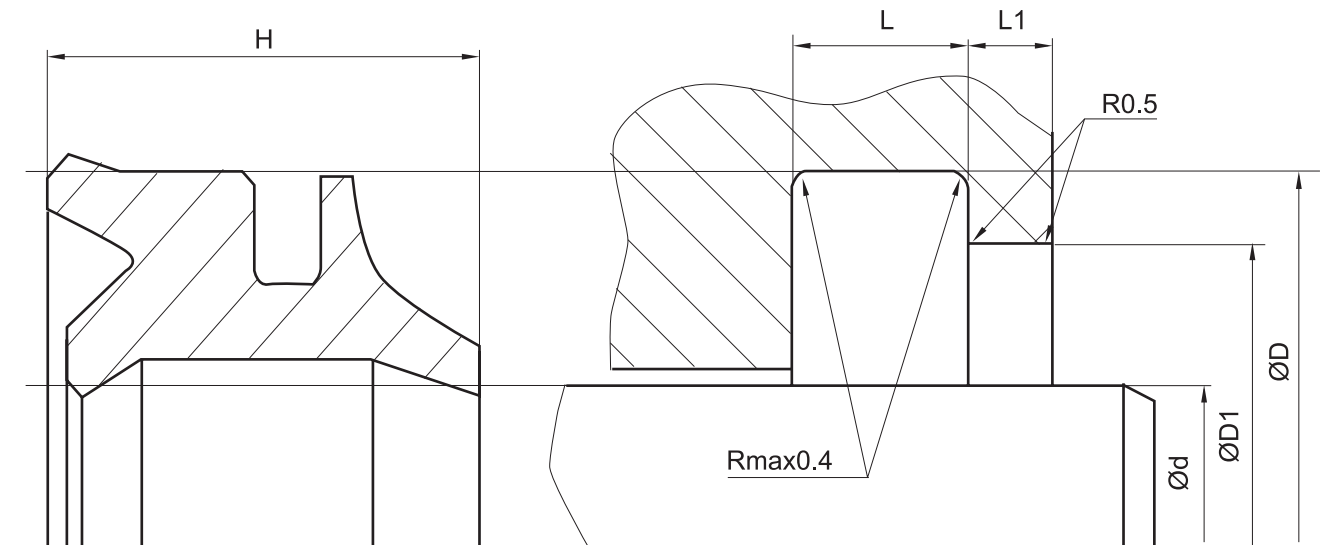
surface roughness	Rtmax (µm)	Ra (µm)
sliding surface	according to seal data	
bottom of groove	≤6,3	≤1,6
groove face	≤15	≤3

**tolerance recommendation****seal housing tolerances**

$L < 10 \text{ mm}$	0,2
$L \geq 10 \text{ mm}$	$\pm 0,1$
D1	H11
D	H11

seal & housing recommendations

please note that we are able to produce those profiles to your specific need or any non standard housing. for detail measurements, please see seal-mart catalog...



don't hesitate to contact our technical department for further information or for special requirements (temperature, speed etc.), so that suitable materials and/or designs can be recommended.